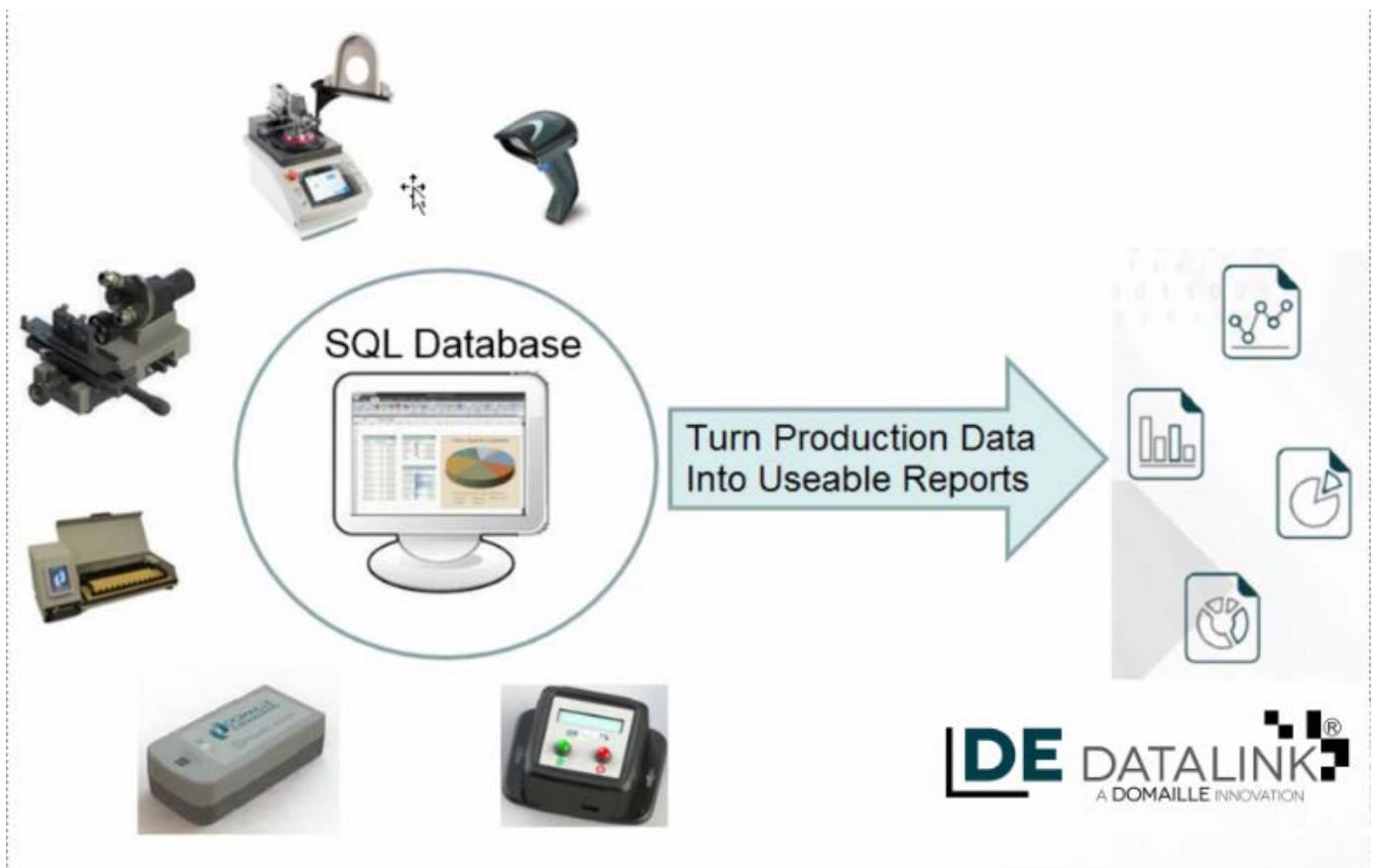


## DE DataLink®

Smart Factory Intelligence



DE DataLink® brings smart factory technology to your finger tips with remote monitoring of the entire production line. Increase profitability and productivity through data driven continuous improvement. Configured to provide immediate feedback on a wide variety of key metrics associated with productivity and yield.

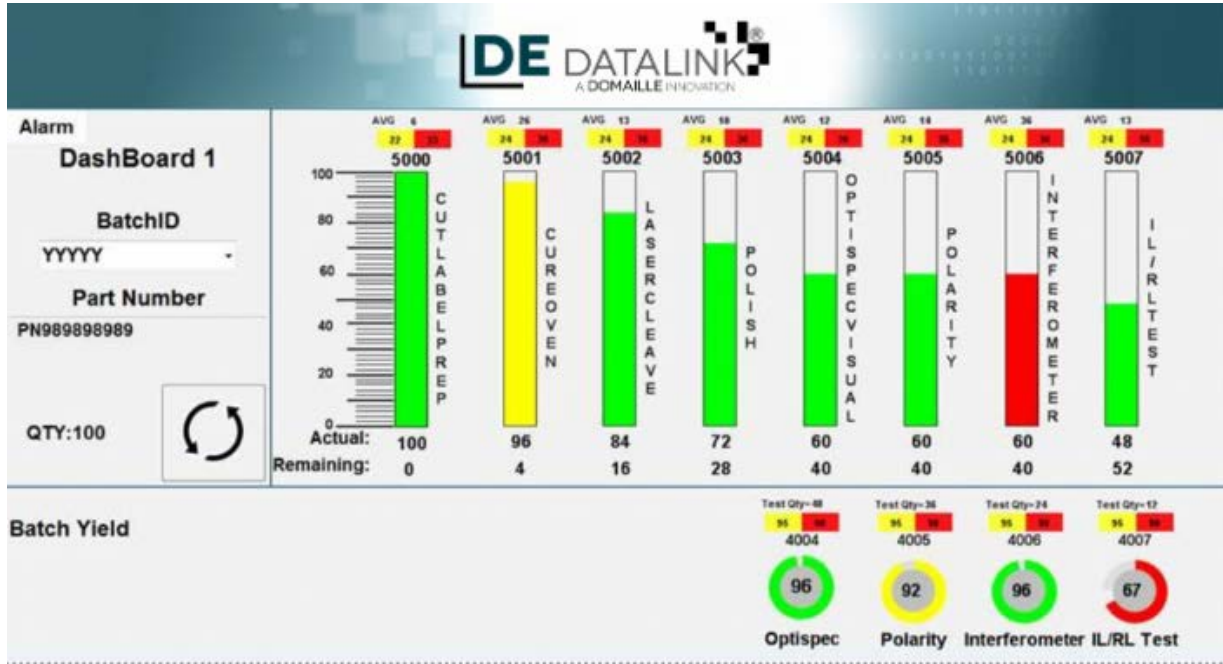


### Features:

- “Real Time” data capture
- Performance to standard as well as yield
- Barcode (data matrix) scanning
- Remote monitoring- temperatures, yield, time, location, cutting process and process status
- Monitor user throughput
- Remotely upload/download polishing processes to multiple machines
- User selects desired data for export
- Report generating capability
- Acquire down time history
- Alert capabilities
- Measures manufacturing efficiency

7100 Dresser Drive NE | Rochester, MN 55906 | Phone: 507.281.0275

DomailleEngineering.com



- Track performance status by monitoring time standards by process operation - Red, Green, Yellow indicator
- Monitor yield standards by test process step - Red, Green, Yellow indicator
- Real time look at throughput, identify bottlenecks



Custom node boxes and bar code readers at each process step make for easy data capture.

- Productivity and quality modes available
- Batch quantity automatically read from bar code
- Pareto style defect tracking available
- Operator sign-in for tracking staff productivity